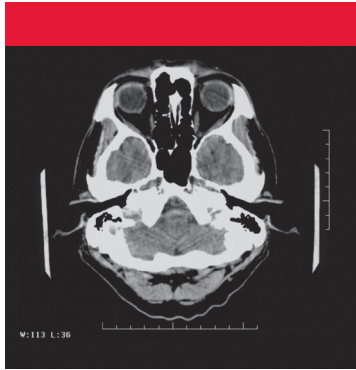


BRAIN TUMORS AND CANCERS

Familydoctor.org reports that 1 of 2 men and 1 of 3 women will develop cancer in their lifetime.¹ Owing to a combination of causes including genetic and environmental, more than 120 types of brain tumors² and associated cancers have led to enormous challenges in both research efforts and in developing appropriate and successful treatment regimens. Additionally deadly is metastasis to the brain, the most feared complication of systemic cancer. Incidence is rising with improved survival of cancer patients, and brain metastases are an increasingly important cause of morbidity and mortality in cancer patients.

Primary Brain Tumors

Tumors that begin in brain tissue are known as primary tumors of the brain. (Information about secondary brain tumors is also available.) Primary brain tumors are named according to the type of cells or the part of the brain in which they begin. The most common primary brain tumors are gliomas. They begin in glial cells. There are many types of gliomas including Astrocytoma, Brain stem glioma, Ependymoma and Oligodendroglioma. Some types of brain tumors do not begin in glial cells. The most common of these are Medulloblastoma, Meningioma, Schwannoma, Craniopharyngioma, Germ cell tumor, Pineal region tumor and Primary Central Nervous System Lymphoma.³



www.unlockingbraintumors.org



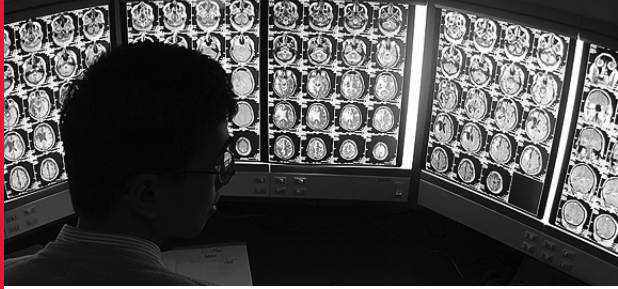
958 South Shore Drive
Holland, MI 49423



Unlocking A Mystery, Increasing Survival and Hope

Every day, talented researchers, physicians and experts are working to unlock the mystery behind brain tumors. But there is one aspect of this effort about which there is no doubt: brain tumors are one of the most devastating forms of cancer that we know. While great advancements in treatment have given so many cancer victims many extra years or even decades of living and return to well being, brain tumors remain one of the most costly and debilitating forms of cancer. Because of its location, the brain tumor can have serious impact on an individual's personality, memories and basic motor skills, robbing the patient of their very being; in this way, the impact on family and friends is also felt, as the brain tumor patient may be "lost" to them even earlier than feared.

Unlocking A Mystery, Increasing Survival and Hope



Survival rates vary by the type of tumor, but for the most common, Glioblastoma multiforme, or GBM, which is unfortunately also the most serious type, the chances of living 5 years is less than 3% (with most patients living no more than a year despite aggressive therapy), and these remaining months or years may be characterized primarily by patient discomfort and palliative efforts at stabilization. All the while, the financial impact of a brain tumor on patient and family is staggering.

The devastating brain tumor picture is especially in need of support. Research funding, which has historically already less adequate than necessary, has been further curtailed. A slowing of research has impacted the ability to focus on long term results, and coupled with shrinking research budgets and rising operational costs, critical research advancements are underfunded. And while many organizations and individuals are expending great energy and dedication in these efforts, there is too often difficulty in getting existing dollars directly into the hands of researchers. Many established researchers are now turning to private foundations to access more funding, in turn making it difficult for junior investigators to access funds for initial data. The advancements we need – possibly just 4-6 years away, are simply out of reach due to funding deficits.

U.S. Mortality

From 2000-2004, the median age at death for cancer of the brain and other nervous system was 64 years of age. Approximately 4.3% died under age 20; 4.0% between 20 and 34; 8.0% between 35 and 44; 15.4% between 45 and 54; 20.1% between 55 and 64; 22.8% between 65 and 74; 19.6% between 75 and 84; and 5.8% 85+ years of age.⁴ As mentioned earlier, however, survival rates for the most common form, GBM, the chances of living 5 years is less than 3%.

Risk Factors

According to the American Brain Tumor Association's book, A Primer of Brain Tumors, no risk factor accounting for the majority of brain tumors has been identified, even though many environmental genetic factors have been, and are, being studied. Causes and risk factors can be environmental, such as being exposed to poisonous substances in the home or at work, eating or not eating certain foods, or whether we exercise/smoke cigarettes/drink alcohol. They can be genetic, such as being born with a mutation/susceptibility that one inherits from parents. Or, these genetic mutations/susceptibilities may accumulate over time, as one grows older.

SUPPORT OUR CAUSE

For more in-depth discussions or to get involved in this very important cause, please call, write or visit us. You'll find that it's easy to help, and that your help will quickly be put to good use. Whether you have a preferred beneficiary, level of involvement, or simply want to help our team in whatever area possible, we'll make it easy for you to do just that.

www.unlockingbraintumors.org

Stephen Coffman, Project Sponsor
stevecoffman@mac.com and
steve@unlockingbraintumors.org
958 South Shore Drive • Holland, MI 49423
(616) 335-9050 (office) and (312) 375-8346 (cell)

THE MUSELLA FOUNDATION FOR BRAIN TUMOR RESEARCH & INFORMATION, INC.

The Musella Foundation for Brain Tumor Research & Information, Inc., our lead beneficiary, (www.virtualtrials.com) is at the forefront in the fight against brain tumors. They strive to improve the lives of families dealing with brain cancer.

Musella Foundation for Brain Tumor Research
1100 Peninsula Boulevard
Hewlett, NY 11557
888.295.4740/516.295.4740

A FEW OF OUR OTHER BENEFICIARIES

- International Brain Tumour Alliance (IBTA)
- American Brain Tumor Association (ABTA), <http://www.abta.org/index.cfm>
- The Pediatric Brain Tumor Foundation (www.pbtfus.org)
- Recognizing the importance of local and alumnus giving, and in our efforts to be unbiased, we will also send funding to a variety of **University Hospitals, Medical Research Facilities and Comprehensive Cancer Centers** including:
 - Memorial Sloan-Kettering Cancer Center
 - Duke University Comprehensive Cancer Center
 - Jonsson Comprehensive Cancer Center (UCLA)
 - Robert H. Lurie Comprehensive Cancer Center of Northwestern University
 - M. D. Anderson Cancer Center at the University of Texas
 - University of Pittsburgh Cancer Institute
 - Other credible groups that may be beneficiaries

¹ <http://familydoctor.org/online/famdocen/home/common/cancer/basics/729.html>

² Pediatric Brain Tumor Association - <http://www.pbtfus.org/medcomm/research/Pediatric-brain-tumor-facts-updated.html>

³ <http://www.cancer.gov/cancertopics/wyntk/brain/page6>

⁴ All statistics in this report are based on SEER incidence and NCHS mortality statistics. Most can be found within: Ries LAG, Melbert D, Krapcho M, Mariotto A, Miller BA, Feuer EJ, Clegg L, Horner MJ, Howlader N, Eisner MP, Reichman M, Edwards BK (eds). SEER Cancer Statistics Review, 1975-2004, National Cancer Institute. Bethesda, MD, http://seer.cancer.gov/csr/1975_2004/, based on November 2006 SEER data submission, posted to the SEER web site, 2007.

Unlocking A Mystery, Increasing Survival and Hope

Donate today and be a part of the cure!